

REPLAT PLAT
WILDWOOD SHORES
 SECTION FOUR

BEING A SUBDIVISION OF 21.42 ACRES OF LAND SITUATED IN THE G.W. ROBINSON SURVEY, A-454, AND THE ALEXANDER WHITTAKER, A-581, WALKER COUNTY, TEXAS, AND BEING OUT OF A TRACT RECORDED IN VOL. 390, PG. 439 AND VOL. 219, PG. 492, DEED RECORDS, WALKER COUNTY, TEXAS.

CONTAINS 102 LOTS, 4 BLOCKS, 2 RESERVES

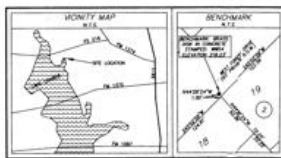
Owner / Developer
 DUNRICH HOLDING COMPANY, L.P.
 P.O. BOX 8426
 14 REVEREND DRIVE E., D-100
 ENGLEWOOD, COLORADO 80155

PREPARED BY



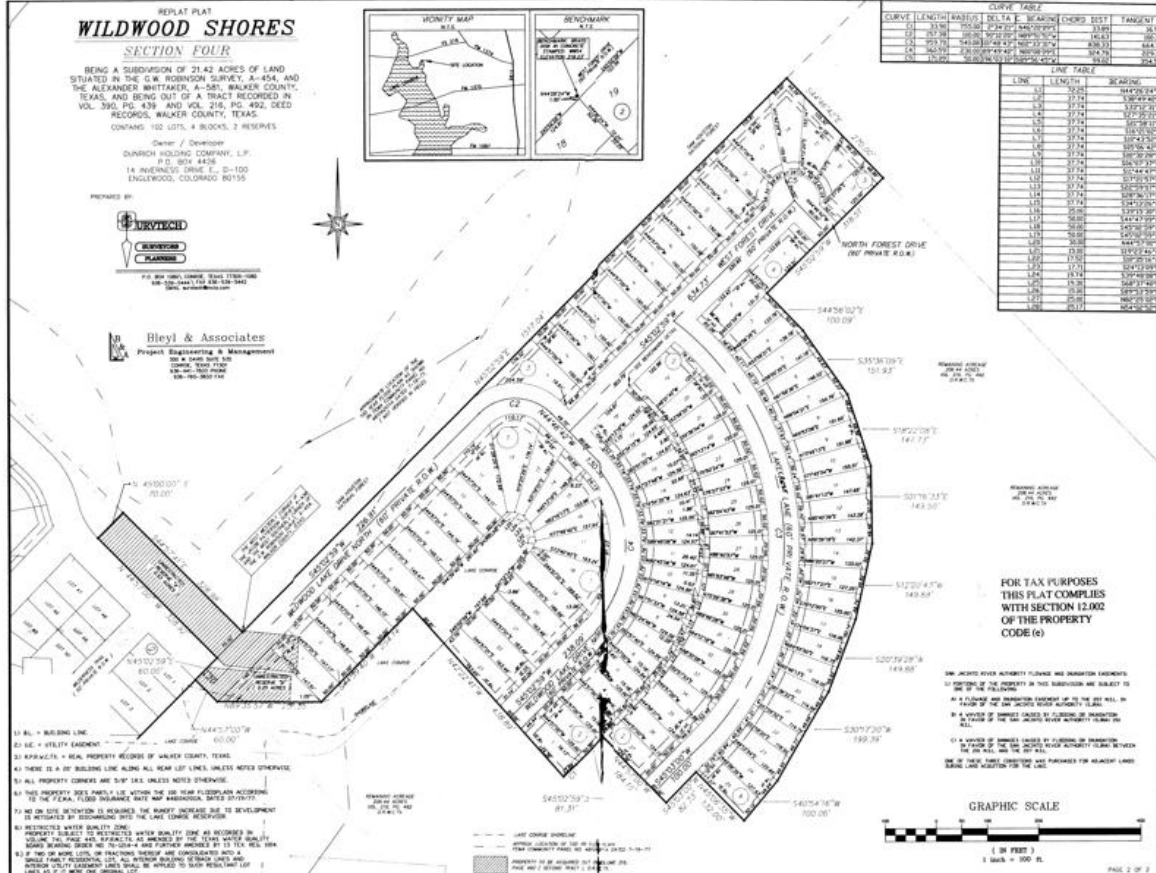
For more information, please contact:
 800-544-1174 ext. 100-3443
 800-544-1174 ext. 100-3443
 Fax: 303-685-0001

Hyley & Associates
 Project Engineering & Management
 300 S. MAIN ST. SUITE 200
 DENVER, COLORADO 80202
 303-733-3614



CURVE LENGTH	WALSH DELTA	BEARING	CHORD DIST.	TANGENT
121.00	33.00	S64°52'00"W	21.85	31.50
121.00	33.00	S64°52'00"W	21.85	31.50
121.00	33.00	S64°52'00"W	21.85	31.50
121.00	33.00	S64°52'00"W	21.85	31.50

LINE	LENGTH	BEARING
1.01	52.00	S64°52'00"W
1.02	52.00	S64°52'00"W
1.03	52.00	S64°52'00"W
1.04	52.00	S64°52'00"W
1.05	52.00	S64°52'00"W
1.06	52.00	S64°52'00"W
1.07	52.00	S64°52'00"W
1.08	52.00	S64°52'00"W
1.09	52.00	S64°52'00"W
1.10	52.00	S64°52'00"W
1.11	52.00	S64°52'00"W
1.12	52.00	S64°52'00"W
1.13	52.00	S64°52'00"W
1.14	52.00	S64°52'00"W
1.15	52.00	S64°52'00"W
1.16	52.00	S64°52'00"W
1.17	52.00	S64°52'00"W
1.18	52.00	S64°52'00"W
1.19	52.00	S64°52'00"W
1.20	52.00	S64°52'00"W
1.21	52.00	S64°52'00"W
1.22	52.00	S64°52'00"W
1.23	52.00	S64°52'00"W
1.24	52.00	S64°52'00"W
1.25	52.00	S64°52'00"W
1.26	52.00	S64°52'00"W
1.27	52.00	S64°52'00"W
1.28	52.00	S64°52'00"W
1.29	52.00	S64°52'00"W
1.30	52.00	S64°52'00"W



FOR TAX PURPOSES
 THIS PLAT COMPLES
 WITH SECTION 12.002
 OF THE PROPERTY
 CODE (e)

- 1. THE ACRES RIVER ACTIVITY FLUME AND TRANSPORT ELEMENTS
- 2. PORTION OF THE PROPERTY IN THIS SUBDIVISION ARE SUBJECT TO
- 3. AS A FLOODING AND TRANSPORT ELEMENTS ARE TO BE SET AS
- 4. IN A PORTION OF THE ACRES RIVER ACTIVITY FLUME
- 5. IN A PORTION OF THE ACRES RIVER ACTIVITY FLUME
- 6. IN A PORTION OF THE ACRES RIVER ACTIVITY FLUME
- 7. IN A PORTION OF THE ACRES RIVER ACTIVITY FLUME
- 8. IN A PORTION OF THE ACRES RIVER ACTIVITY FLUME
- 9. IN A PORTION OF THE ACRES RIVER ACTIVITY FLUME
- 10. IN A PORTION OF THE ACRES RIVER ACTIVITY FLUME
- 11. IN A PORTION OF THE ACRES RIVER ACTIVITY FLUME
- 12. IN A PORTION OF THE ACRES RIVER ACTIVITY FLUME
- 13. IN A PORTION OF THE ACRES RIVER ACTIVITY FLUME
- 14. IN A PORTION OF THE ACRES RIVER ACTIVITY FLUME
- 15. IN A PORTION OF THE ACRES RIVER ACTIVITY FLUME
- 16. IN A PORTION OF THE ACRES RIVER ACTIVITY FLUME
- 17. IN A PORTION OF THE ACRES RIVER ACTIVITY FLUME
- 18. IN A PORTION OF THE ACRES RIVER ACTIVITY FLUME
- 19. IN A PORTION OF THE ACRES RIVER ACTIVITY FLUME
- 20. IN A PORTION OF THE ACRES RIVER ACTIVITY FLUME

